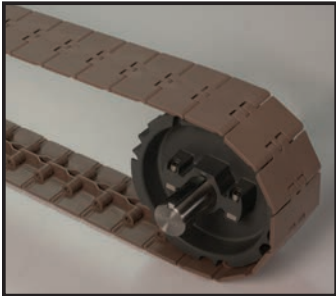


PORTFOLIO

# INTRALOX PLASTIC CHAINS

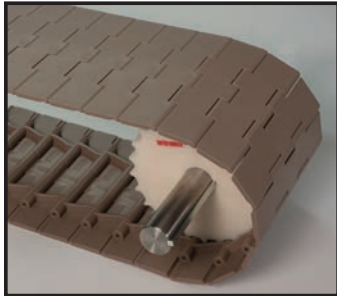
## PLASTIC STRAIGHT RUNNING CHAINS



**Series 820**

Available Widths:  
3.25 in (82.55 mm)  
4.5 in (114.3 mm)  
7.5 in (190.5 mm)

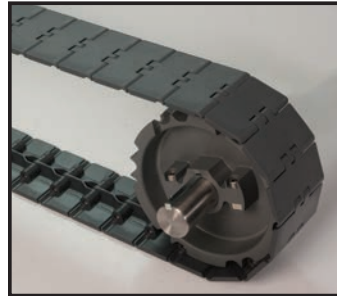
Available Materials:  
LF Acetal



**Series 821**

Available Widths:  
7.5 in (190.5 mm)

Available Materials:  
LF Acetal, UP

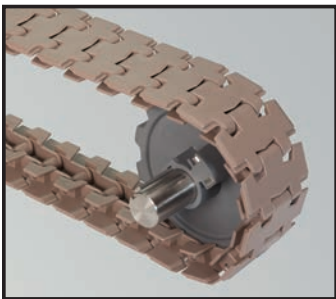


**Series 831**

Available Widths:  
3.25 in (82.55 mm)  
4.5 in (114.3 mm)  
7.5 in (190.5 mm)\*

Available Materials:  
LF Acetal, UP  
\*LF Acetal only.

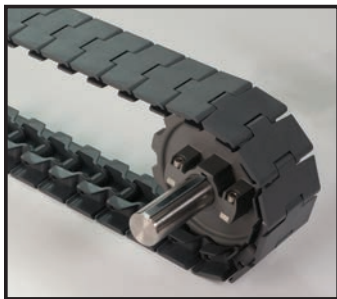
## PLASTIC SIDEFLEXING CHAINS WITH TABS



**Series 878**

Available Widths:  
3.25 in (82.55 mm)

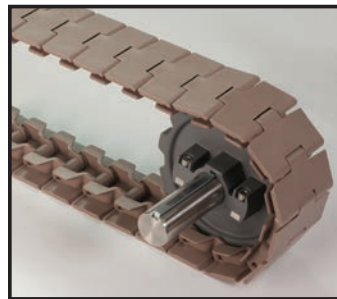
Available Materials:  
LF Acetal



**Series 879**

Available Widths:  
3.25 in (82.55 mm)  
4.5 in (114.3 mm)

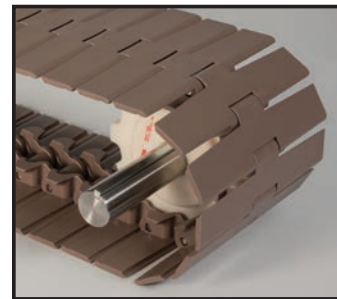
Available Materials:  
LF Acetal, UP



**Series 880**

Available Widths:  
3.25 in (82.55 mm)  
4.5 in (114.3 mm)

Available Materials:  
LF Acetal

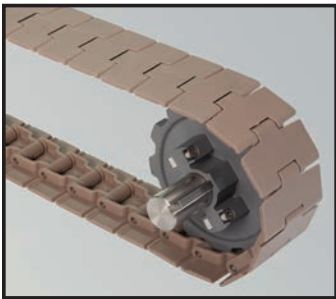


**Series 882**

Available Widths:  
4.5 in (114.3 mm)  
7.5 in (190.5 mm)  
12 in (304.8mm)\*

Available Materials:  
LF Acetal, UP  
\*LF Acetal only.

## PLASTIC SIDEFLEXING MAGNETIC CHAINS



**Series 880**

Available Widths:  
3.25 in (82.55 mm)

Available Materials:  
LF Acetal



**Series 1060**

Available Widths:  
3.3 in (83.8 mm)

Available Materials:  
UP

For sprocket material and size availability please call Customer Service or visit [intralox.com](http://intralox.com).